



TRELLEBORG



Trelleborg



# TM3000 for sustainable farming



The TM3000, designed according to the Blue Tire Technology, is the Trelleborg's answer to the latest and future generations of harvesters, combine machines and spreaders.

A new tread pattern, along with the advanced casing design, maximize the load capacity of the tire at low inflation pressure.

The TM3000 respects the soil and boosts crop yield while preserving the environment. Matching sustainable and precision farming approaches, it is the right choice to increase the productivity of your farm, lowering overall operating costs while looking after the safety and comfort of the operators.



**HIGH  
STABILITY**



**SUPERIOR  
FLOTATION**



**RESISTANCE  
TO STUBBLE DAMAGE**



**EXCELLENT  
SELF-CLEANING**

# TM3000 for harvester and combine machines

- 1 Sharp inclination of the lug to provide excellent stability on slopes.
- 2 Inter-lug terracing at the base of the lug to maximize the self-cleaning capability of the tire.
- 3 Increased lug base diameter to improve maneuverability and reduce stress in the shoulder area.
- 4 Rounded shoulder profile, to prevent stubble damage, resulting in high durability.
- 5 Rounded lug base to support the tire during combine steering.



# Extra wide footprint

The latest tests performed show that the TM3000's footprint is up to 5% wider than its premium competitor. The larger contact area significantly reduces soil compaction, providing high flotation characteristics, respecting the soil and preserving its organic life.

## Footprint comparison - Index

*Higher is better*

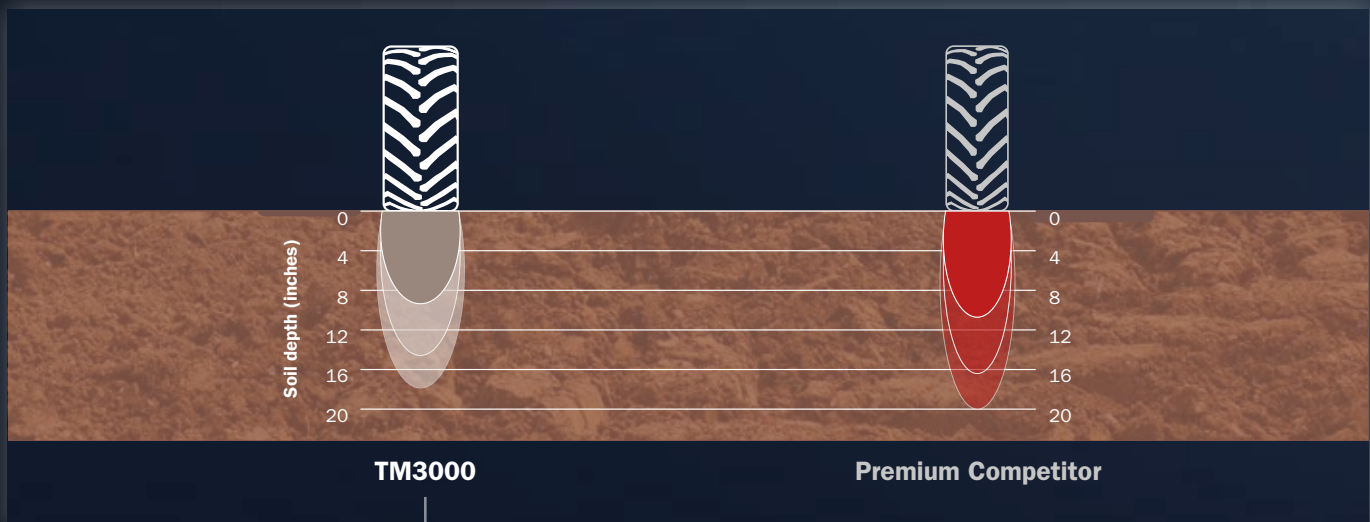
**Up to +5%  
wider footprint  
vs. a Premium Competitor**



Reference size: IF 800/70R32 CFO  
Tire Load: 29,050 lbs  
Field conditions: 15 Cyc  
Inflation pressure: 35 psi

## Flotation comparison - Index

*Lower is better*



**+5% flotation  
vs. a Premium Competitor**

# TM3000 for spreader and sprayer machines

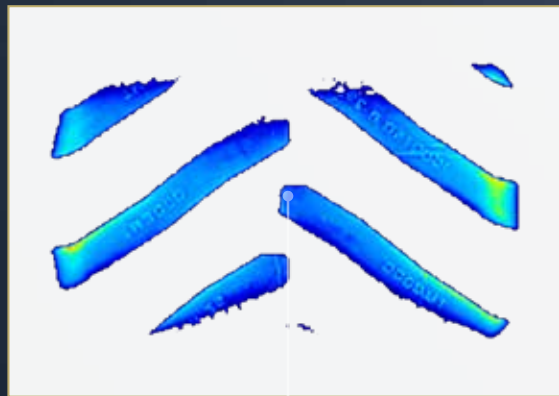
The new generation of spreaders and sprayers show an increasing need for carrying higher loads, while constantly reducing the contact pressure on the field, to limit soil compaction during operations.

- 1 Higher number of lugs compared to the main competitors in the market, improving tire wear and ride.
- 2 Wide width for maximum flotation and minimum soil compaction.
- 3 Extra lug, in addition to the interlug terrace, to enhance the self-cleaning capability of the tire.
- 4 Rounded shoulder for maximum soil respect.
- 5 ProgressiveTraction® design, to improve traction and improve tire wear.



# Low soil compaction

The TM3000 offers the benefits of VF construction and, compared to a non-VF option, it allows the machine to carry up to 40 percent more load at the same pressure, or to inflate the tire with up to 40 percent less pressure while carrying the same load. In addition, the ProgressiveTraction® technology applied on the tread increases traction and helps protect the tire from stubble damage, thereby improving road wear and comfort. The rounded shoulder of the tread makes the TM3000 very respectful on soil and grassland, and improves machine handling.



**Wide footprint area,  
low soil compaction**



# TM3000

Size	Tread Pattern	SW inches	OD inches	SLR inches	RC inches	SRI	Rim	Permitted Rims	Type
<b>VF 1000/50R25 184D*</b>	TM3000	40.6	64.6		191.7	775	36.0 TH		Tubeless
<b>VF 620/70R26 CFO 173A8</b>	TM3000	23.4	59.1	25.4	178.3	725	DW20B		Tubeless
<b>VF 750/50R26 169D*</b>	TM3000	29.5	55.7	24.2	166.5	675	DW27B	DW25B	Tubeless
<b>VF 750/65R26 CFO 177A8</b>	TM3000	29.1	64.9	28	192.2	775	DW25B	DW25B	Tubeless
<b>650/75R32 172A8</b>	TM3000	24.3	71.5	32.3	216.5	850	DW20B		Tubeless
<b>IF 800/65R32 CFO 178A8</b>	TM3000	29.7	72.8	31.9	219.5	875	DW27B		Tubeless
<b>IF 800/70R32 CFO 182A8</b>	TM3000	30.5	76.8	33.5	230.1	900	DW27B		Tubeless
<b>IF 900/65R32 CFO 191A8 (191B)</b>	TM3000	35.4	78.1	34.4	235.2	925	DW31B	DW30B	Tubeless
<b>VF 1050/50R32 198D*</b>	TM3000	40.7	73.2	32.3	219.3	875	36.00 VA		Tubeless
<b>IF 800/70R38 CFO 187A8</b>	TM3000	30.7	80.7	35.6	243.7	975	DW27B		Tubeless

\* = spreader tire tread pattern



Discover our website

Follow us



Yokohama TWS North America, Inc.  
107 Audubon Road – Building 2 – Suite 205 – Wakefield, MA 01880  
866-633-8473 – info.twsa@yokohama-tws.com  
www.trelleborg-tires.com/en-us