



TRELLEBORG



Trelleborg

Forestry Tires



Twin Forestry T480. The track solution

When the going gets tough, the T480 gets to work. The T480's transverse grooves and wide flat tire profile give it unmatched track grip and compatibility. Even without tracks, you will experience unmatched pulling power in every condition. Additionally, the tread design featuring our inter-lug terraces, ensures a self-cleaning tire that can always work harder and push further.



Key Benefits

- The armored plies and steel belts protect the casing against stumps, boulders and rocks.
- A perfect fit with tracks for exceptional grip.
- Transverse grooves and a wide flat tire profile for optimized track usage performance.
- The well-known Trelleborg feature of inter-lug terraces has also been added, keeping the tread clean and providing excellent traction.
- Large contact area with low ground pressure for less impact on the forest floor.

T480 is designed according to the Trelleborg BlueTire technology, developed to reduce the environmental footprint as well as provide the end-user with premium productivity and efficiency.

BLUE TIRE
TECHNOLOGY

Transverse grooves

The transverse grooves and the wide flat profile gives a perfect fit with tracks for exceptional grip.

1



Transverse grooves
Optimal grip in tracks.

2



Wide lug shoulder
Good track lateral stability and shoulder robustness.

3



Wide flat tire profile
Excellent compatibility with tracks.

4



Inter-lug terraces
Good self-cleaning.



Twin Forestry T440

The traction solution

More traction, better accessibility - the T440 incorporates ProgressiveTraction® technology for the best possible grip. The interlug-terraces keep the tread clean all day long. The strong lug heads and shoulder, make your T440 an even better match for tracks.



Key Benefits

- The armored plies and steel belts protect the casing against stumps, boulders and rocks.
- Ideal for clay, mud, ice and snow – first class traction design means maximum accessibility.
- Exclusive ProgressiveTraction® technology with an extra biting edge for proven better grip.
- The well-known Trelleborg feature of inter-lug terraces has also been added, keeping the tread clean and providing excellent traction.
- New lug design with heavier shoulder, lug heads and transverse edges for effective track compatibility.

T440 is designed according to the Trelleborg BlueTire technology, developed to reduce the environmental footprint as well as provide the end-user with superior productivity and efficiency.

BLUE TIRE
TECHNOLOGY

Dual anchor with ProgressiveTraction®

The ProgressiveTraction® technology is characterized by a special double lug that operates on the soil at different times, progressively releasing high traction when and where it is needed. The double lug also provides the tire with better flotation capability, ensuring an even pressure distribution over the extra wide footprint.

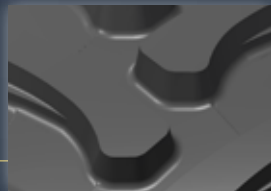
The different planes between the lugs flex in relation to one another, enhancing self-cleaning, particularly in heavy conditions.

1



Inter-lug terraces
Enhanced self-cleaning.

2



Wide lug head and transverse edges
Large contact and enhanced grip in tracks.

3



Lug angle and design
Additional traction and accessibility.

4



ProgressiveTraction® technology
Improved traction performance.

5



Wide lug shoulder
Excellent lateral stability and shoulder robustness.



Skidder T418

The heavy duty solution

The tire is specifically designed for log skidding service, offering maximum traction and a cut-and-tear resistant tread rubber compound to provide longer tire life under the most severe operating conditions.

Forestry Skidder
T418



Forestry Skidder
T418
High Power



Key Benefits

- The armored plies and steel belts protect the casing against stumps, boulders and rocks.
- Cut and tear resistant tread rubber for longer tire life.
- The T418 High Power utilizes the well-known Trelleborg feature of inter-lug terraces, these keep the tread clean and providing excellent traction.
- Deep, strong lugs provide and maximize traction and grip.
- Extra reinforced sidewall increases stability and protection against impacts.

1



Casing structure

Robust structure for tough forest conditions, built from durable cord and steel belt reinforcement.

2



Pattern design

The deep and strong 23° lugs provide maximum traction and a firm grip on slippery and soft surfaces.

3



Sidewalls

Extra rubber reinforcement in the sidewall increases the lateral stability of the tire and protects it against impact.

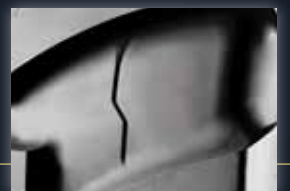
4



Bead

A specially design debris deflector protects the rim flange and tire bead. The dual bead cores ensure an exceptionally strong fit on the rim.

5



Inter-lug terraces

Good self-cleaning.



Agroforest T410

The flexible solution

T410 Agroforest represents the best choice for a combination of agricultural and forestry applications. It guarantees optimal performance in tough forestry service as well as in field use, where comfort and traction are required.



Key Benefits

- Reinforced sidewall to guarantee minimum impact and perforation.
- Special lug shape to ensure excellent grip and traction in tough terrain.
- High level of stability during heavy applications due to the shoulder design.
- Larger lug contact area compared to an ordinary tractor pattern.

Twin T404, T414, T421 The complementary solution

Key Benefits

- Large ground contact area for minimum soil compaction.
- Reinforced sidewalls.
- Low ground pressure.
- Good lateral stability.
- Excellent grip and traction in tough terrain.

Twin T404 for forestry trailers

This tire is characterized by its rounded shoulder design and wide contact area. The non-aggressive tread pattern is suitable for soft terrain.



Twin T414 for small forestry machines

This tire offers superior performance in the forest. The pattern design ensures high traction, excellent flotation and minimized damage to the soil structure.



Twin T421 for small forestry machines

This unique bias-belt design maximizes the ground contact area improving flotation and traction. The rounded shoulder ensures minimum soil compaction.



Twin Forestry for CTL-machines



SIZE	Tread Pattern	LI/SI/PR				New Tire		Tire in Service		SLR	RC	SRI	RIM	TUBE
		ROAD	PR	FOREST HT	FOREST LT	SW inch	OD inch	SW max inch	OD max inch					
650/45-22.5 LS2 TT	T440 SB	150A8	16	150A2	157A2	25.6	45.7	26.9	46.8	21.2	-	550	AG20.00	650/45-22.5
600/50-22.5 LS2 TT	T480 SB	149A8	16	149A2	156A2	24.0	46.1	25.2	47.2	21.7	138.2	550	AG20.00	600/50-22.5
710/40-22.5 LS2 TT	T480 SB	161A8	20	161A2	169A2	28.0	46.1	29.4	46.4	21.3	138.2	550	AG24.00	700/40-22.5
710/40-24.5 LS2 TT	T440 SB	163A8	20	163A2	170A2	28.0	48.0	29.3	48.4	22.4	145.7	575	AG24.00	710/40-24.5
710/40-24.5 LS2 TT	T480 SB	163A8	20	163A2	170A2	28.0	48.0	29.3	48.4	22.4	145.7	575	AG24.00	710/40-24.5
600/55-26.5 LS2 TT	T440 SB	165A8	20	165A2	172A2	23.6	52.8	24.8	54.1	24.6	159.4	625	AG20.00	600/55-26.5
600/55-26.5 LS2 TT	T480 SB	165A8	20	165A2	172A2	23.6	52.8	24.8	54.1	24.6	159.4	625	AG20.00	600/55-26.5
710/45-26.5 LS2 TT	T440 SB	168A8	20	168A2	175A2	28.0	52.8	29.4	53.4	24.6	158.3	625	AG24.00	710/45-26.5
710/45-26.5 LS2 TT	T480 SB	168A8	20	168A2	175A2	28.0	52.8	29.4	53.4	24.6	158.3	625	AG24.00	710/45-26.5
710/45-26.5 LS2 TT	T480 SB	173A8	24	173A2	180A2	28.0	52.8	29.4	53.4	24.6	158.3	625	AG24.00	710/45-26.5
800/40-26.5 LS2 TT	T440 SB	170A8	20	170A2	177A2	31.5	52.8	33.1	53.4	24.6	158.3	625	AG28.00	800/40-26.5
800/40-26.5 LS2 TT	T480 SB	170A8	20	170A2	177A2	31.5	52.8	33.1	53.4	24.6	158.3	625	AG28.00	800/40-26.5
750/55-26.5 LS2 TT	T440 SB	182A8	24	182A2	190A2	29.5	58.5	31.0	59.0	27.2	176.6	700	AG24.00	750/50-26.5
750/55-26.5 LS2 TT	T480 SB	182A8		182A2	190A2	29.5	58.5	31.0	59.0	27.2	176.6	700	AG24.00	750/50-26.5
780/50-28.5 LS2 TT	T480 SB	182A8	24	182A2	190A2	30.7	60.0	32.2	60.7	27.8	183.5	705	AG26.00	780/50-28.5
750/45-30.5 LS2 TT	T428 SB	173A8	20	173A2	180A2	29.5	57.7	31.0	58.9	27.6	173.0	685	AG24.00	750/45-30.5
600/65-34 LS2 TL	T440 SB	163A8	20	163A2	170A2	24.0	65.0	24.8	66.5	30.1	199.6	775	DW20A	600/65-34
710/55-34 LS2 TL	T440 SB	167A8	20	167A2	174A2	28.0	65.0	29.4	66.6	30.5	194.9	760	DW24A	700/55-34

SB = Steelbelt TT = Tube Tire TL = Tubeless Tire

Skidder for FL-machines



SIZE	Tread Pattern	PR	New Tire		Tire in Service		SLR	RC	RIM	TUBE
			SW inch	OD inch	SW max inch	OD max inch				
23.1-26 TL	T418 FS SB	16	23.6	63.6	24.2	65.2	29.5	189.4	DW20B	23.1-26 TR218
28L-26 TL	T418 FS SB	20	27.8	64.2	28.5	65.7	29.4	191.1	DW25B	28L-26 TR218
28L-26 TL	T418 FS SB	26	27.8	64.2	28.5	65.7	29.4	191.1	DW25B	28L-26 TR218
24.5-32 TL	T418 FS SB	16	24.8	71.9	25.4	73.6	32.8	213.6	DH21	24.5-32 TR218
30.5L-32 TL	T418 FS SB	20	29.9	72.4	30.7	74.2	33.1	215.4	DH27	30.5L-32 TR218
30.5L-32 TL	T418 FS SB	26	29.9	72.4	30.7	74.2	33.1	215.4	DH27	30.5L-32 TR218
30.5L-32 TL	T418 High Power	32	30.3	74.0	31.1	75.0	34.1	220.1	DH27	30.5L-32 TR218
DH35.5L-32 TL	T418 FS SB	24	35.0	78.7	36.2	80.3	35.6	233.3	DH31	35.5L-32 TR218
DH35.5L-32 TL	T418 High Power	30	36.2	80.1	37.4	81.7	36.2	237.4	DH31	35.5L-32 TR218

SB = Steelbelt TL = Tubeless Tire



Agroforest for tractors

SIZE	Tread Pattern	LI/SI	New Tire		Tire in Service		SLR	RC	SRI	RIM	TUBE
			SW inch	OD inch	SW max inch	OD max inch					
320/85-24 TT (12.4-24)	T410	127A8 (124B)	12.8	45.9	13.6	46.9	21.5	136.3	550	W9, W10 - W11	12.4-24
380/85-24 TT (14.9-24)	T410	137A8 (134B)	15.0	49.6	16.1	51.3	23.0	148.3	590	W11, W13 - W12	14.9-24
380/85-24 TL (14.9-24)	T410	143A8 (140B)	15.4	50.2	16.1	51.3	23.6	150.0	600	W11, W13 - W12	14.9-24
380/85-28 TT (14.9-28)	T410	139A8 (136B)	15.0	53.7	16.1	55.2	25.1	160.3	650	W11, W13 - W12	14.9-28
420/85-28 TT (16.9-28)	T410	144A8 (141B)	17.3	56.5	17.8	58.1	26.3	168.3	675	W13, W14L - W15L	16.9-28
460/85-30 TT (18.4-30)	T410	150A8 (147B)	18.9	61.0	19.3	62.9	28.3	182.4	725	W14L, W15L - W16L	18.4-30
420/85-34 TT (16.9-34)	T410	147A8 (144B)	17.3	62.0	17.8	64.1	29.0	186.4	750	W13L, W14L - W15L	16.9-34
420/85-34 TL (16.9-34)	T410	153A8 (150B)	17.5	62.0	18.1	64.1	29.0	186.4	750	W13L, W14L - W15L	16.9-34
460/85-34 TT (18.4-34)	T410	152A8 (149B)	18.7	64.8	19.3	66.9	30.2	194.4	775	W14L, W15L - W16L	18.4-34
420/85-38 TT (16.9-38)	T410	149A8 (146B)	17.3	66.1	17.8	68.1	31.0	198.3	800	W13, W14L - W15L	16.9-38
460/85-38 TT (18.4-38)	T410	154A8 (151B)	18.5	68.9	19.3	70.9	32.2	206.3	825	W14L, W15L - W16L	18.4-38
520/85-38 TT (20.8-38)	T410	160A8 (157B)	20.5	72.8	21.9	75.2	33.8	218.4	875	DW16L - DW18L	20.8-38

TT = Tube Tire TL = Tubeless Tire

Twin for forestry trailers and small forestry machines

T404 T421 T414



SIZE	Tread Pattern	LI/SI/PR			New Tire		Tire in Service		RC	SRI	RIM	TUBE
		ROAD PR	FOREST HT	FOREST LT	SW inch	OD inch	SW max inch	OD max inch				
500/45-22.5 TT	T404 FS	129A8	129A2	136A2	19.7	40.2	20.7	41.1	120.7	485	AG16.00	500/45-22.5
500/60-22.5 TT	T421 SB	144A8	144A2	151A2	19.7	46.1	20.7	47.2	138.8	550	AG16.00	500/60-22.5
600/60-30.5 LS2 TT	T414 FS	153A8	153A8	160A2	23.6	58.9	25.1	60.8	176.6	700	AG20.00	600/60-30.5

SB = Steelbelt TT = Tube Tire

Trelleborg offers a wide range of wheels

Find out more





Discover our website

Follow us



Yokohama TWS North America, Inc.
107 Audubon Road – Building 2 – Suite 205 – Wakefield, MA 01880
866-633-8473 – info.twsa@yokohama-tws.com
www.trelleborg-tires.com/en-us